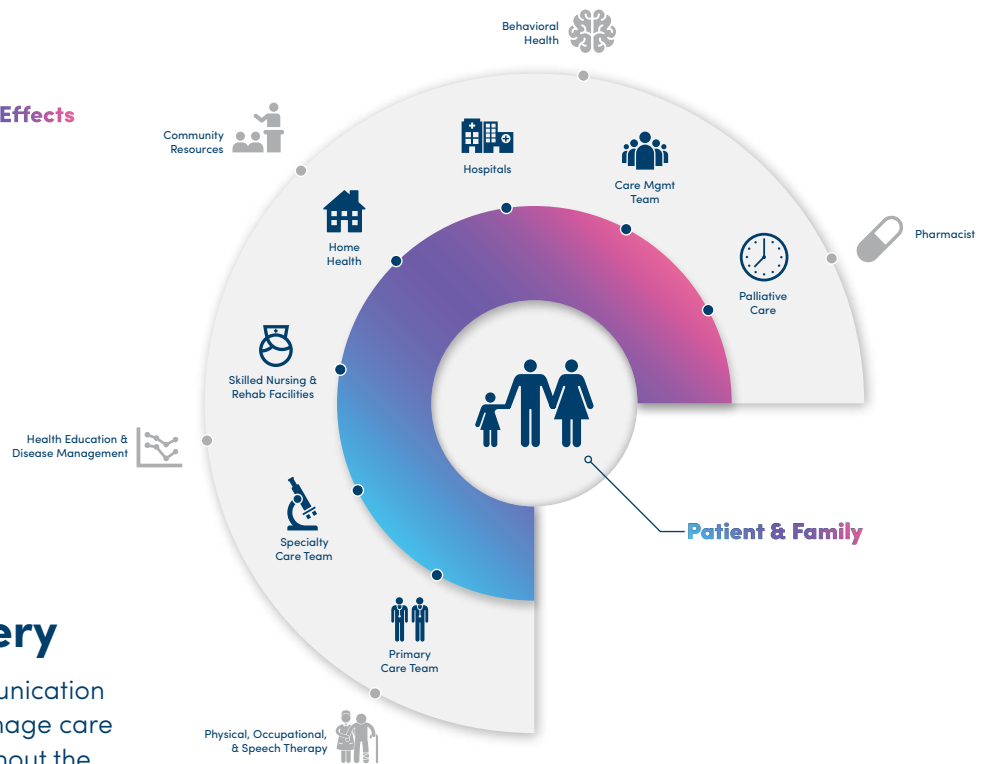
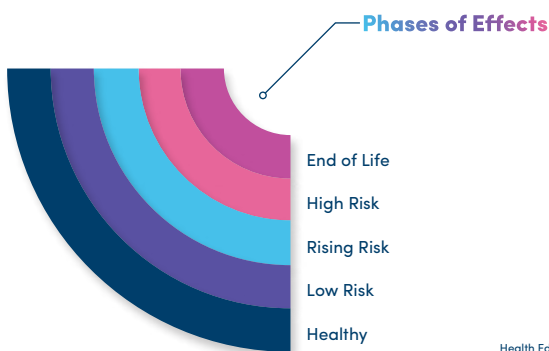


# Improved Care Management

Canopy Health improves quality, patient satisfaction, and costs by optimizing coordination and management of care. As an alliance, we partner to prioritize care management from operations to the executive level and stratify patients based on care needs.

## Phases of Effects



## Improved Care Delivery

Canopy Health has streamlined communication between carriers and providers to manage care coordination and collaboration throughout the care continuum. This helps ensure the right care, expertise, and capabilities are provided by those closest to the patient.

## Call Us

**Denise Vance-Rodrigues, GBA**

Vice President of Business Development

C: 408.317.8081

Denise.Vance-Rodrigues@CanopyHealth.com