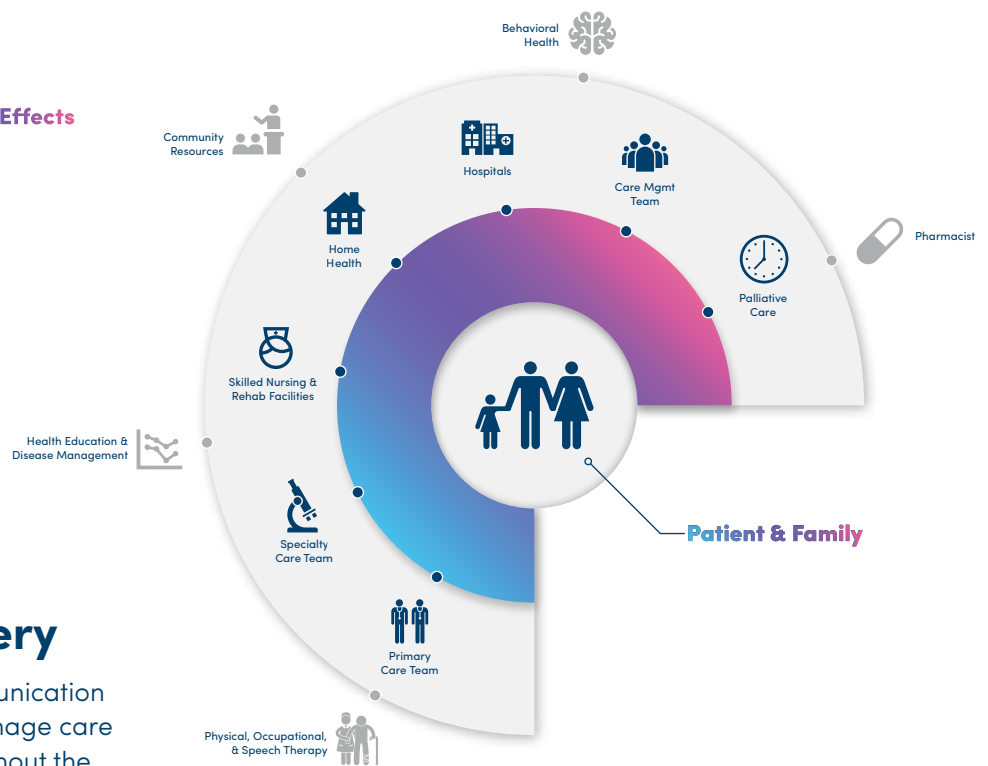
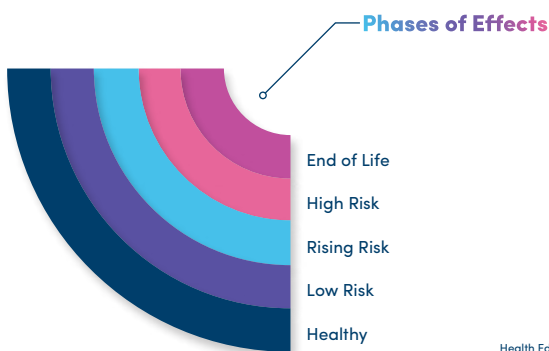


Improved Care Management

Canopy Health improves quality, patient satisfaction, and costs by optimizing coordination and management of care. As an alliance, our partnership prioritizes care management from operations to the executive level and stratifies patients based on care needs.

Phases of Effects



Improved Care Delivery

Canopy Health has streamlined communication between carriers and providers to manage care coordination and collaboration throughout the care continuum. This helps ensure the right care, expertise, and capabilities are provided by those closest to the patient.

Call Us

If you have any questions or need additional help, our contact center provides real-time solutions. **Call us at 888.8.CANOPY.**